

Monthly Statistics

Apr-2010

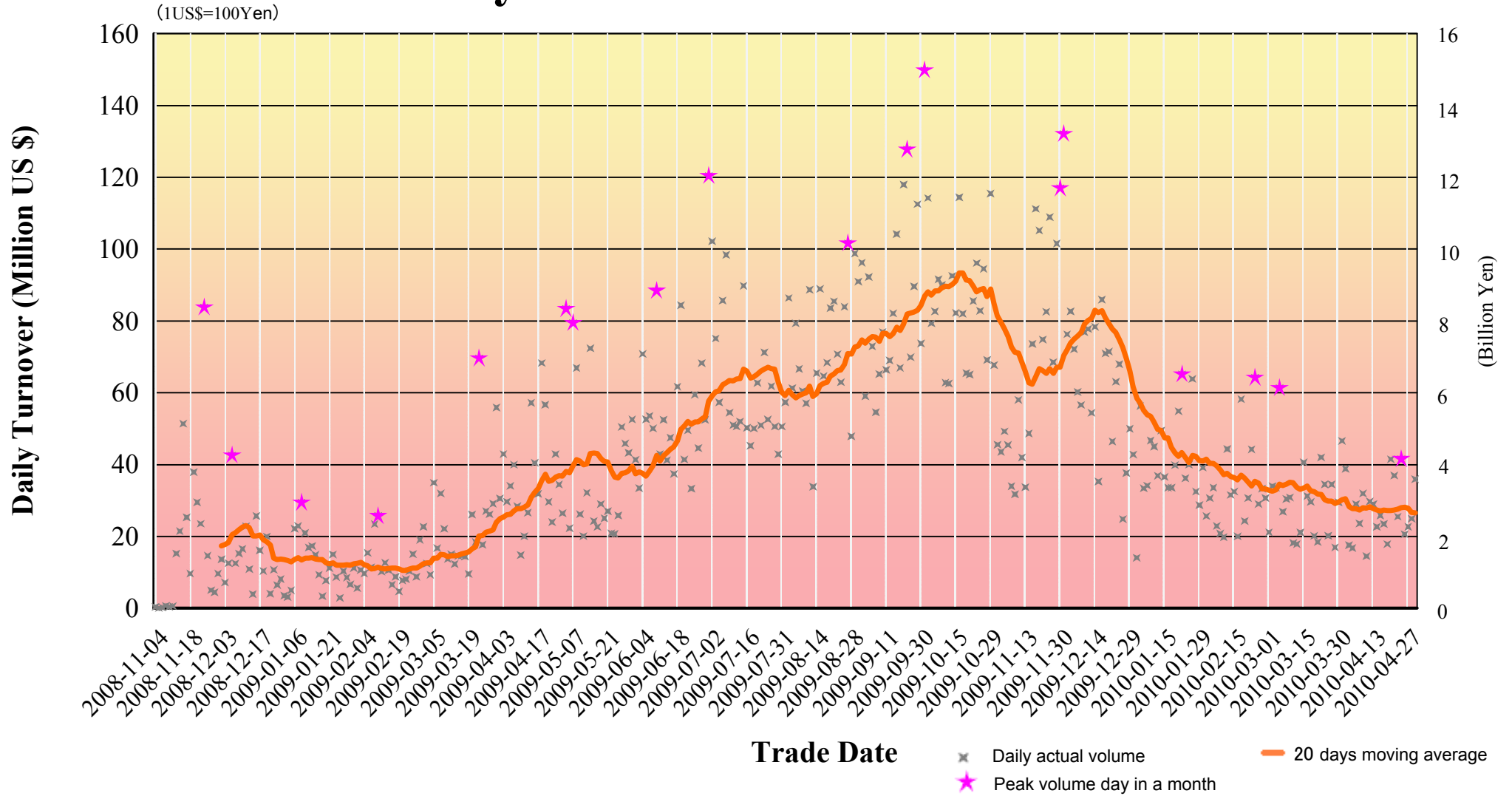
Japannext PTS

SBI Japannext Co., Ltd

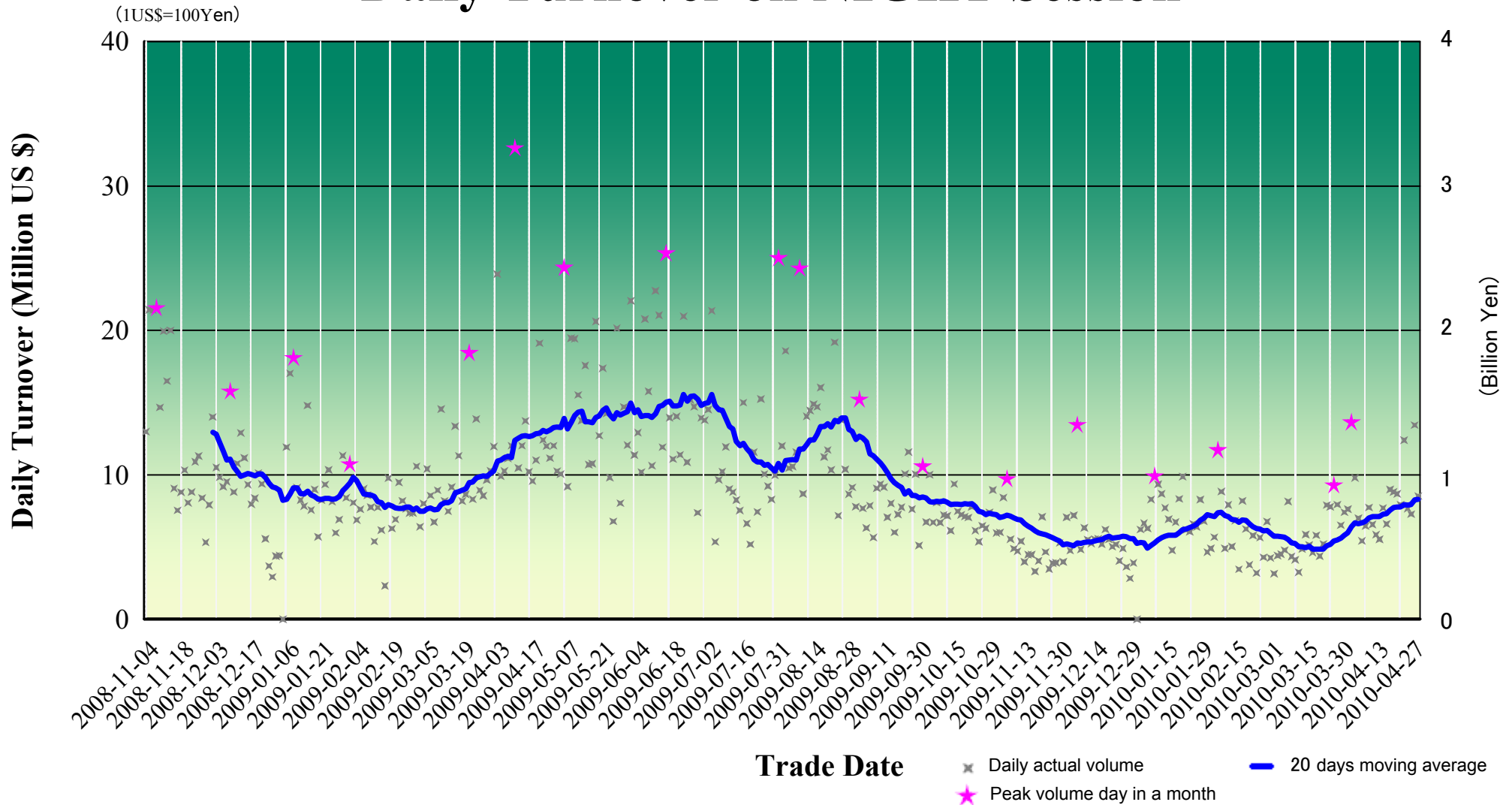
Disclaimer

Information provided is for reference purposes and does not constitute financial product advice nor is construed as an offer to sell or the solicitation of an offer to buy any security. The ownership and the intellectual property rights of this information solely and exclusively belong to SBI Japannext Co.,Ltd. (“SBIJ”). Accordingly users are permitted to get an access and use of the Information for their own personal, non-commercial and internal use only. Although SBIJ has made every effort to ensure the accuracy of the information as at the date of publication, SBIJ does not give any warranty or representation as to the accuracy, reliability or completeness of the information. To the extent permitted by law, SBIJ and its employees, officers and contractors shall not be liable for any loss or damage arising in any way (including by way of negligence) from or in connection with any information provided or omitted or from any one acting or refraining to act in reliance on this information.

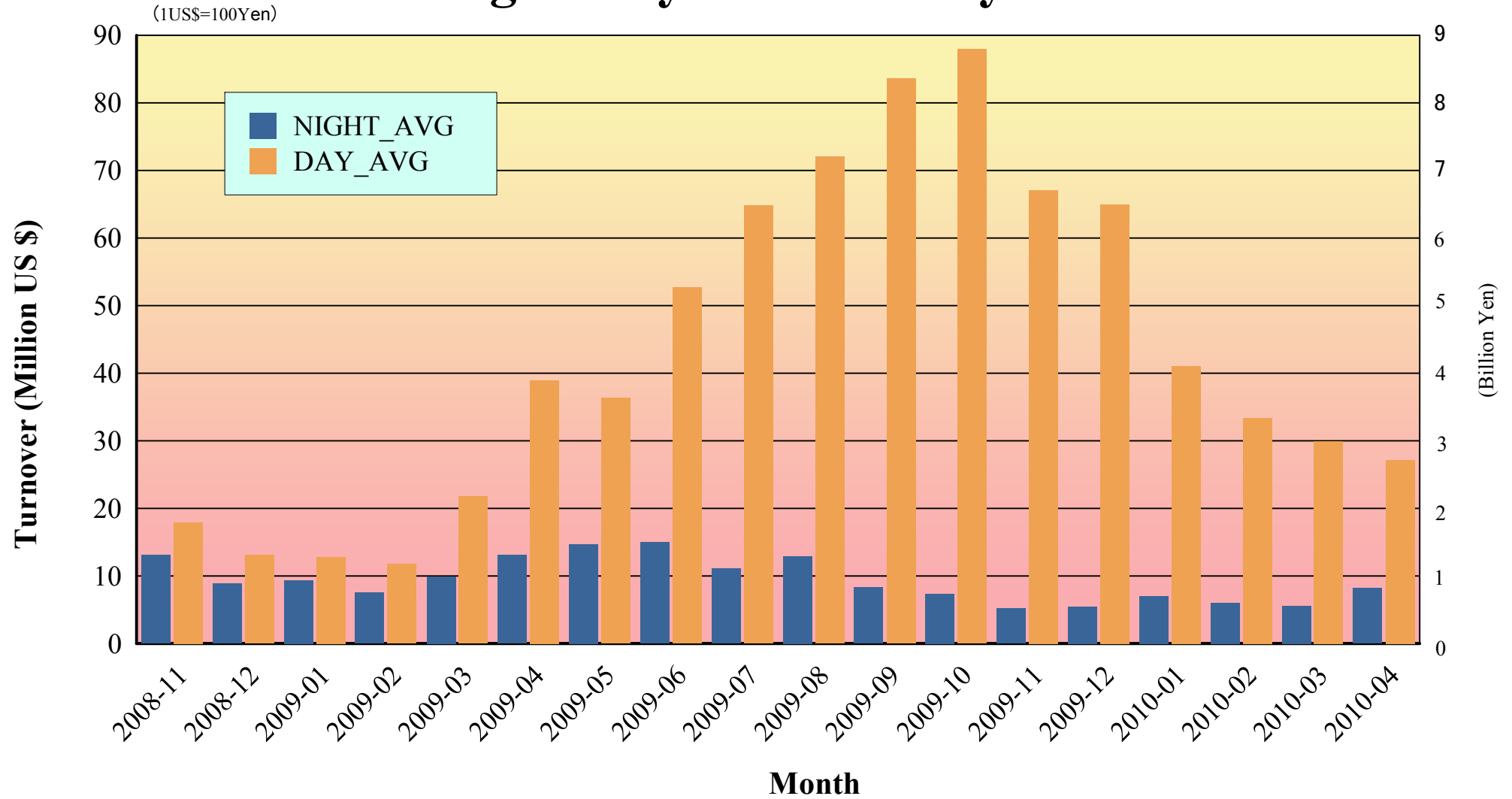
Daily Turnover on DAY Session



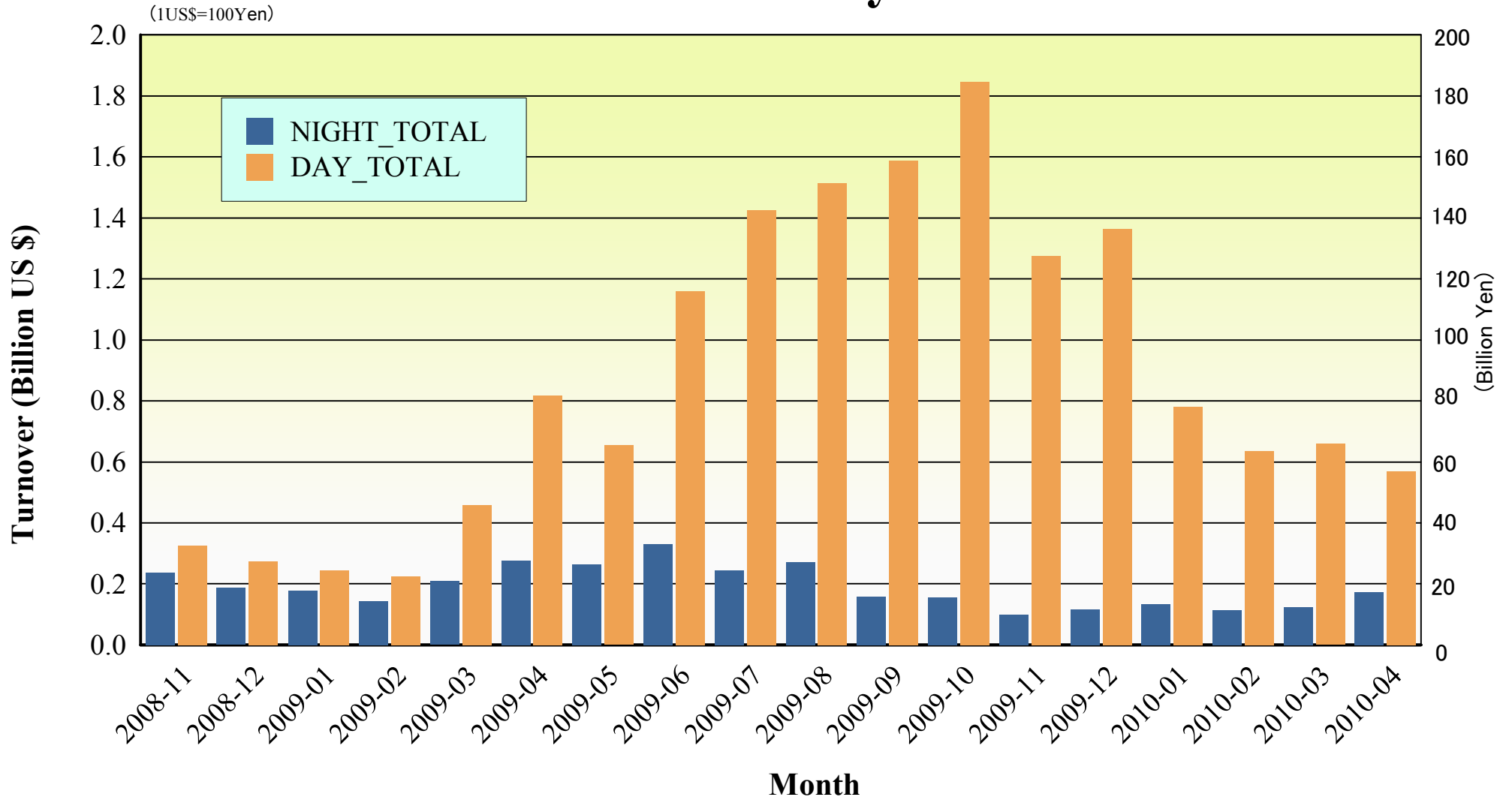
Daily Turnover on NIGHT Session



Average Daily Turnover by Month



Total Turnover by Month



"Daytime Session" Statistics

Nikkei 225 (Apr-2010)

SELL

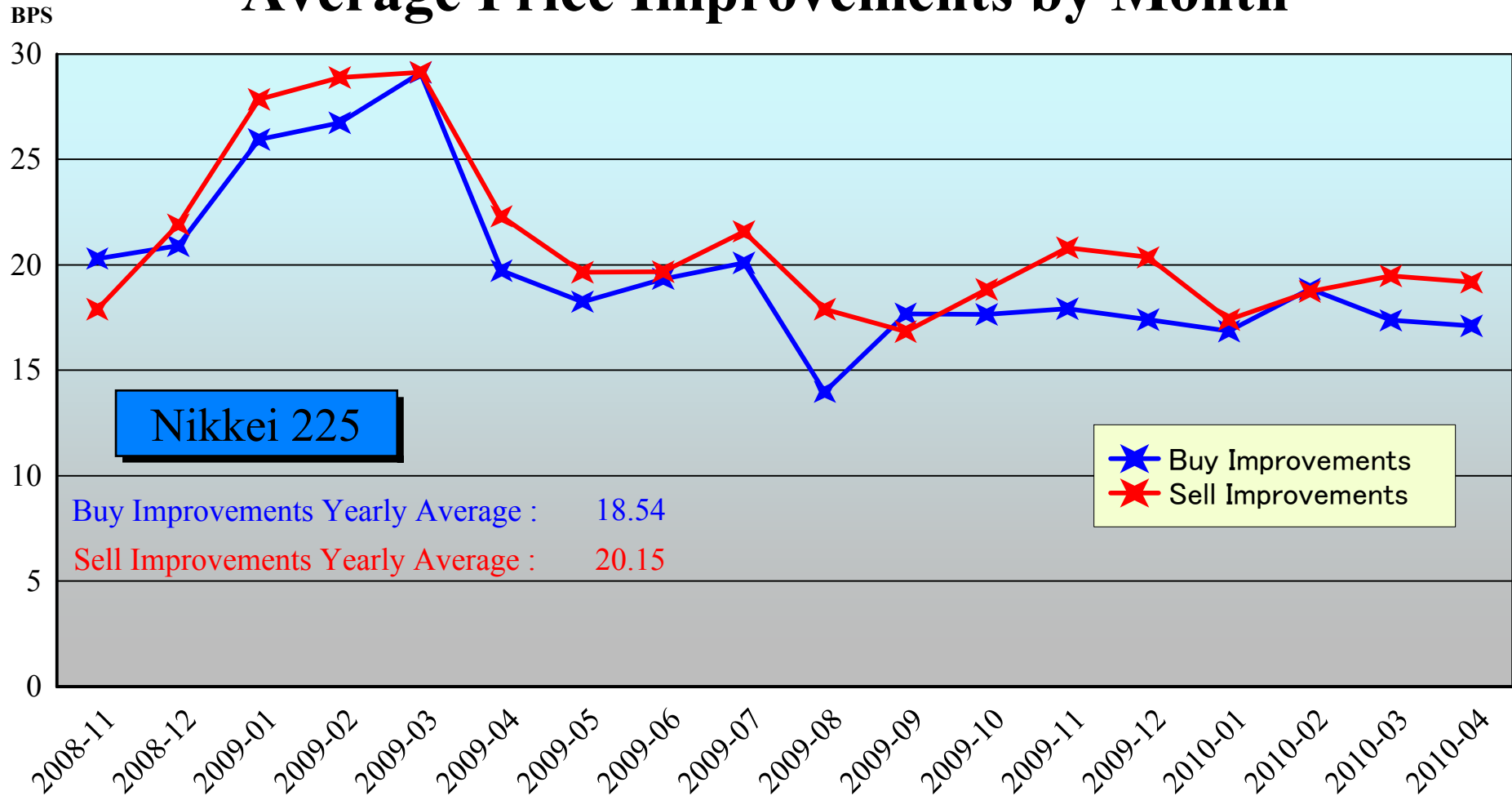
BUY

A. Worse Price Executions	637 (1.24%)	1,054 (2.06%)
B. Equal Price Executions	11,944 (23.30%)	15,105 (29.47%)
C. Better Price Executions	38,676 (75.46%)	35,098 (68.47%)
	<hr/>	
B + C	98.76%	97.94%
A'. Avg. Price Declines	-10.96BPS	-11.63BPS
C'. Avg. Price Improvements	19.18BPS	17.10BPS

Note1: Excluded the executions from before 9AM, lunch break, and after 3PM

Note2: Avg. Price Improvements are based on Japannext vs. Primary Exchange prices

Average Price Improvements by Month



Note1: Excluded the executions from before 9AM, lunch break, and after 3PM

Note2: Avg. Price Improvements are based on Japannext vs. Primary Exchange prices

Day/Night Monthly Turnover for Top 25 Names (Apr-2010)

(DAY Session)

	SYMBOL	DESCRIPTION	TEUNOVER (Million US\$ 1US\$=1Yen)
1	8411	MIZUHO FINANCIAL GROUP, INC.	21.72
2	8316	SUMITOMO MITSUI FINANCIAL GROUP, INC.	15.67
3	7203	TOYOTA MOTOR CORP.	13.95
4	8604	NOMURA HOLDINGS, INC.	11.58
5	9432	NIPPON TELEGRAPH & TELEPHONE CORP.	9.97
6	8306	mitsubishi UFJ FINANCIAL GROUP, INC.	9.51
7	8403	SUMITOMO TRUST & BANKING CO., LTD.	7.59
8	6502	TOSHIBA CORP.	6.92
9	7011	mitsubishi HEAVY IND., LTD.	6.68
10	7267	HONDA MOTOR CO., LTD.	6.16
11	9101	NIPPON YUSEN K.K.	6.15
12	9531	TOKYO GAS CO., LTD.	6.15
13	9202	ALL NIPPON AIRWAYS CO., LTD.	6.03
14	7751	CANON INC.	6.00
15	7201	NISSAN MOTOR CO., LTD.	5.62
16	6501	HITACHI, LTD.	5.47
17	9983	FAST RETAILING CO., LTD.	5.46
18	1605	INPEX CORP.	4.38
19	8332	THE BANK OF YOKOHAMA, LTD.	4.33
20	9433	KDDI CORP.	4.32
21	9532	OSAKA GAS CO., LTD.	4.27
22	5411	JFE HOLDINGS, INC.	4.18
23	8058	MITSUBISHI CORP.	4.02
24	5405	SUMITOMO METAL IND., LTD.	3.99
25	7012	KAWASAKI HEAVY IND., LTD.	3.91

(NIGHT Session)

highlight : "Common" names for Day & NightTime

	SYMBOL	DESCRIPTION	TURNOVER (Million US\$ 1US\$=1Yen)
1	8750	THE DAI-ICHI LIFE INSURANCE CO., LTD.	9.79
2	8411	MIZUHO FINANCIAL GROUP, INC.	7.57
3	7203	TOYOTA MOTOR CORP.	6.71
4	8316	SUMITOMO MITSUI FINANCIAL GROUP, INC.	6.70
5	7974	NINTENDO CO., LTD.	6.00
6	8306	mitsubishi UFJ FINANCIAL GROUP, INC.	5.94
7	6501	HITACHI, LTD.	3.58
8	6502	TOSHIBA CORP.	3.19
9	7267	HONDA MOTOR CO., LTD.	3.19
10	6758	SONY CORP.	2.99
11	9478	SE HOLDINGS AND INCUBATIONS CO., LTD.	2.78
12	3858	UBIQUITOUS CORP.	2.67
13	8058	MITSUBISHI CORP.	2.46
14	8604	NOMURA HOLDINGS, INC.	2.25
15	2370	MEDINET CO., LTD.	1.83
16	7751	CANON INC.	1.68
17	9983	FAST RETAILING CO., LTD.	1.66
18	8031	MITSUI & CO., LTD.	1.63
19	1801	TAISEI CORP.	1.55
20	9984	SOFTBANK CORP.	1.40
21	4314	K.K. DAVINCI HOLDINGS	1.39
22	6301	KOMATSU LTD.	1.24
23	6752	PANASONIC CORP.	1.22
24	7201	NISSAN MOTOR CO., LTD.	1.21
25	2355	SBI NET SYSTEMS CO., LTD.	1.16

Improvements of Monthly Turnover for Top 25 Names (Apr-2010)

(Daytime Session)

	RIC	NAME	Sell Executions							Improve Avg. BPS	Buy Executions							Improve Avg. BPS
			Worse(A)		Equal(B)		Better(C)		(B) + (C)		Worse(A)		Equal(B)		Better(C)		(B) + (C)	
1	8411.T	MIZUHO	39	0.89%	219	4.98%	4,141	94.14%	99.11%	33.32	120	2.73%	340	7.73%	3,939	89.54%	97.27%	25.92
2	8316.T	SMFG	4	0.46%	266	30.57%	600	68.97%	99.54%	10.94	6	0.69%	277	31.84%	587	67.47%	99.31%	12.00
3	7203.T	TOYOTA	16	1.91%	349	41.75%	471	56.34%	98.09%	10.72	17	2.03%	278	33.25%	541	64.71%	97.97%	12.34
4	8604.T	NOMRAHD	19	1.48%	404	31.51%	859	67.00%	98.52%	10.82	6	0.47%	441	34.40%	835	65.13%	99.53%	11.88
5	9432.T	NTT	6	1.15%	67	12.84%	449	86.02%	98.85%	10.88	10	1.92%	240	45.98%	272	52.11%	98.08%	7.33
6	8306.T	MUFG	3	0.27%	301	26.66%	825	73.07%	99.73%	16.20	7	0.62%	480	42.52%	642	56.86%	99.38%	14.55
7	8403.T	SMI-TB	2	0.74%	77	28.62%	190	70.63%	99.26%	14.82	4	1.49%	91	33.83%	174	64.68%	98.51%	11.18
8	6502.T	TOSHIBA	6	2.17%	105	37.91%	166	59.93%	97.83%	12.71	1	0.36%	41	14.80%	235	84.84%	99.64%	14.09
9	7011.T	MHI	4	1.35%	40	13.51%	252	85.14%	98.65%	20.45	13	4.39%	55	18.58%	228	77.03%	95.61%	12.49
10	7267.T	HONDA	2	0.36%	116	20.64%	444	79.00%	99.64%	12.10	16	2.85%	231	41.10%	315	56.05%	97.15%	10.77
11	9101.T	NYKLINE	2	0.68%	57	19.26%	237	80.07%	99.32%	19.10	1	0.34%	48	16.22%	247	83.45%	99.66%	13.79
12	9531.T	TKO-GAS	6	2.03%	24	8.14%	265	89.83%	97.97%	16.03	1	0.34%	35	11.86%	259	87.80%	99.66%	13.82
13	9202.T	ANA	3	0.73%	86	20.92%	322	78.35%	99.27%	24.15	3	0.73%	59	14.36%	349	84.91%	99.27%	18.41
14	7751.T	CANON	10	2.18%	165	35.95%	284	61.87%	97.82%	10.52	9	1.96%	170	37.04%	280	61.00%	98.04%	10.09
15	7201.T	NISSAN	0	0.00%	203	28.16%	518	71.84%	100.00%	11.20	15	2.08%	342	47.43%	364	50.49%	97.92%	9.12
16	6501.T	HITACHI	14	2.31%	44	7.25%	549	90.44%	97.69%	19.26	5	0.82%	190	31.30%	412	67.87%	99.18%	13.48
17	9983.T	FASTRET	7	2.13%	155	47.26%	166	50.61%	97.87%	7.34	6	1.83%	112	34.15%	210	64.02%	98.17%	7.59
18	1605.T	INPEX	4	1.72%	104	44.83%	124	53.45%	98.28%	12.79	1	0.43%	95	40.95%	136	58.62%	99.57%	13.11
19	8332.T	YKHA-BK	0	0.00%	59	25.43%	173	74.57%	100.00%	17.18	8	3.45%	68	29.31%	156	67.24%	96.55%	13.06
20	9433.T	KDDI	5	2.07%	76	31.54%	160	66.39%	97.93%	9.93	10	4.15%	102	42.32%	129	53.53%	95.85%	9.67
21	9532.T	OSK-GAS	0	0.00%	63	15.37%	347	84.63%	100.00%	21.08	4	0.98%	92	22.44%	314	76.59%	99.02%	16.90
22	5411.T	JFE HD	36	9.50%	86	22.69%	257	67.81%	90.50%	13.79	15	3.96%	178	46.97%	186	49.08%	96.04%	13.56
23	8058.T	MITBISI	18	3.50%	124	24.08%	373	72.43%	96.50%	3.78	27	5.24%	189	36.70%	299	58.06%	94.76%	4.14
24	5405.T	SMI-MTI	1	0.31%	28	8.67%	294	91.02%	99.69%	27.25	20	6.19%	59	18.27%	244	75.54%	93.81%	17.26
25	7012.T	KHI	1	0.53%	37	19.58%	151	79.89%	99.47%	23.60	2	1.06%	49	25.93%	138	73.02%	98.94%	24.35

Note1: Excluded the executions from before 9AM, lunch break, and after 3PM

Note2: Avg. Price Improvements are based on Japannext vs. Primary Exchange prices