

Monthly Statistics

Feb-2010

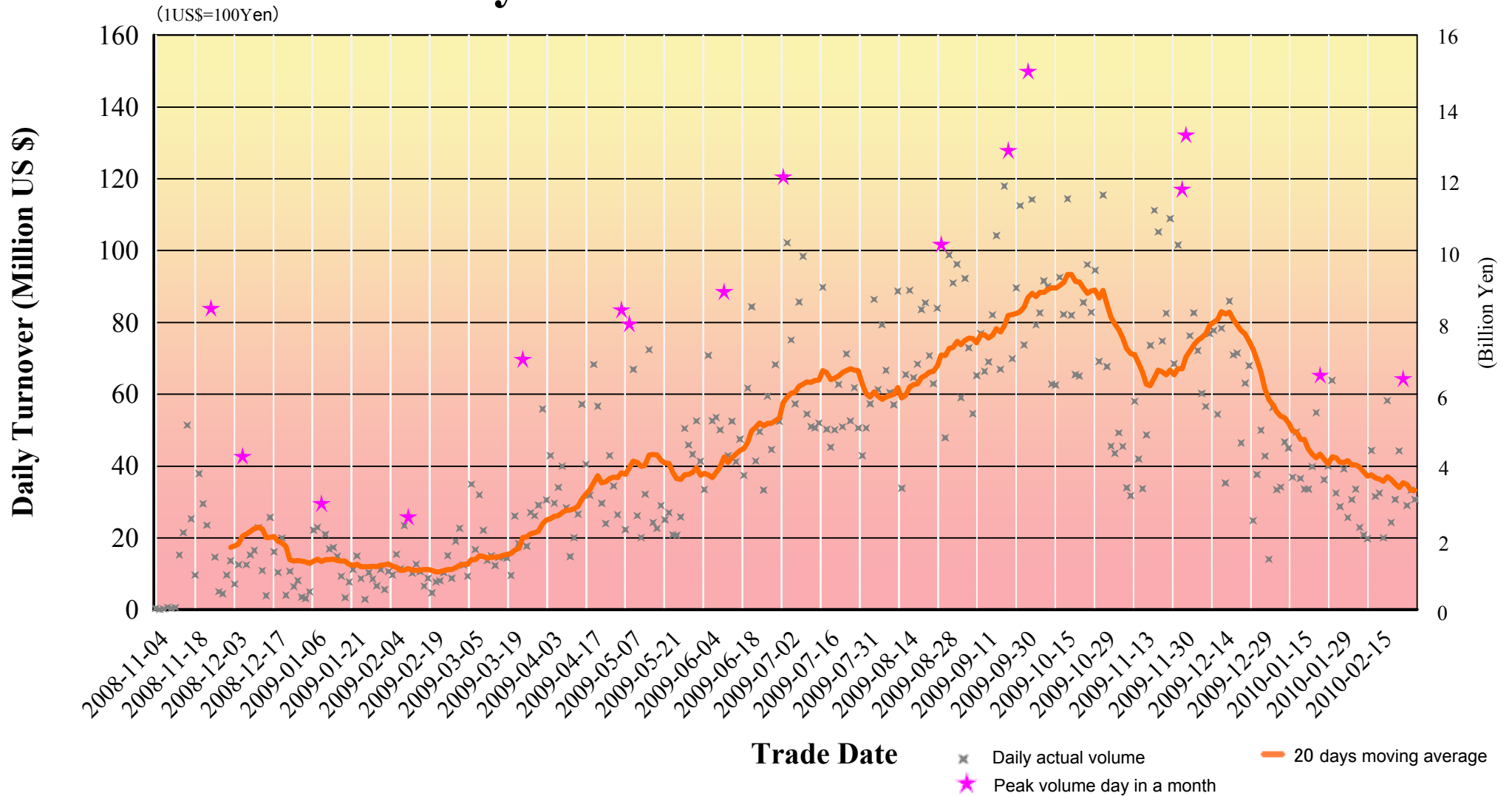
Japannext PTS

SBI Japannext Co., Ltd

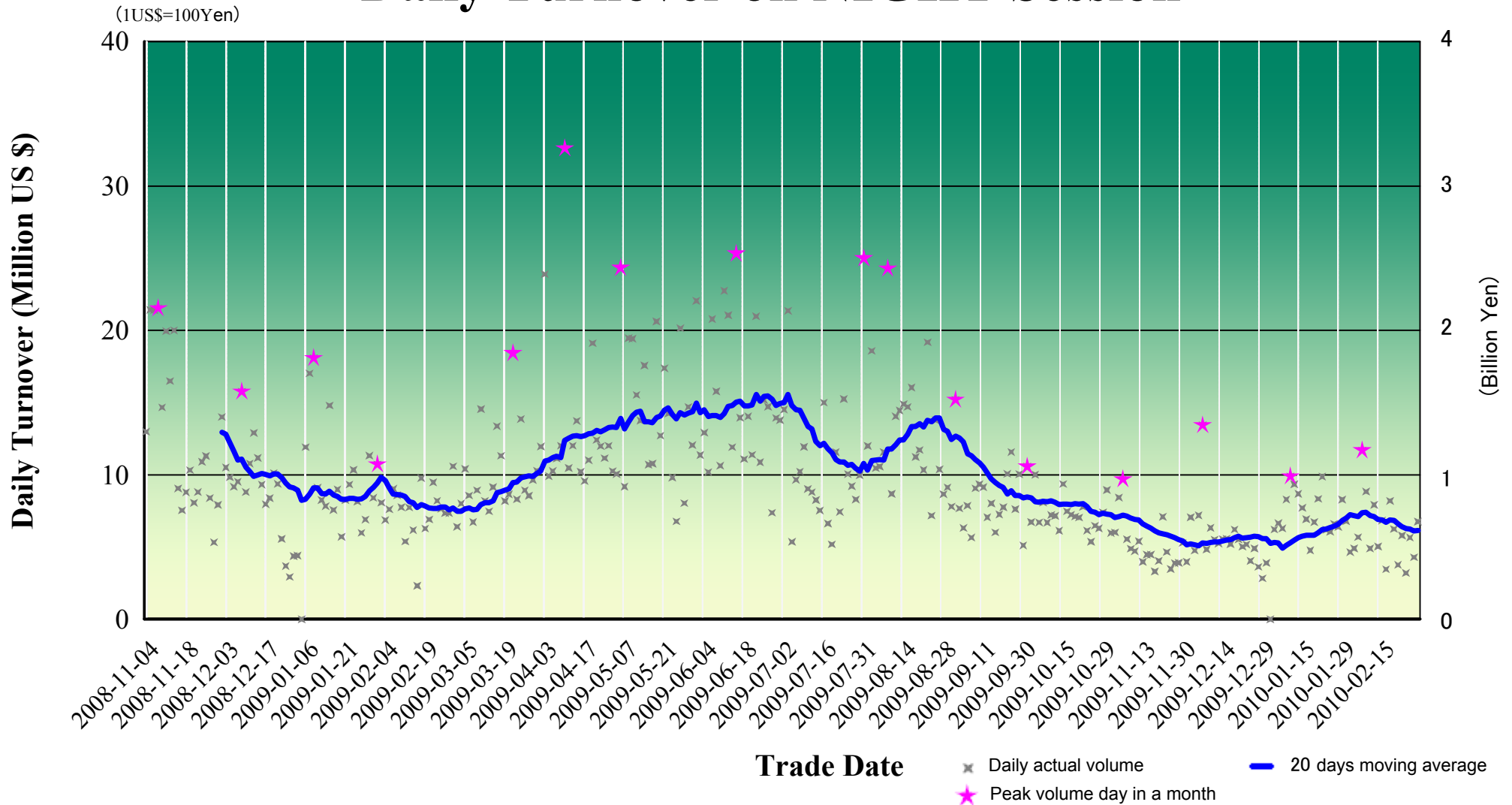
Disclaimer

Information provided is for reference purposes and does not constitute financial product advice nor is construed as an offer to sell or the solicitation of an offer to buy any security. The ownership and the intellectual property rights of this information solely and exclusively belong to SBI Japannext Co.,Ltd. (“SBIJ”). Accordingly users are permitted to get an access and use of the Information for their own personal, non-commercial and internal use only. Although SBIJ has made every effort to ensure the accuracy of the information as at the date of publication, SBIJ does not give any warranty or representation as to the accuracy, reliability or completeness of the information. To the extent permitted by law, SBIJ and its employees, officers and contractors shall not be liable for any loss or damage arising in any way (including by way of negligence) from or in connection with any information provided or omitted or from any one acting or refraining to act in reliance on this information.

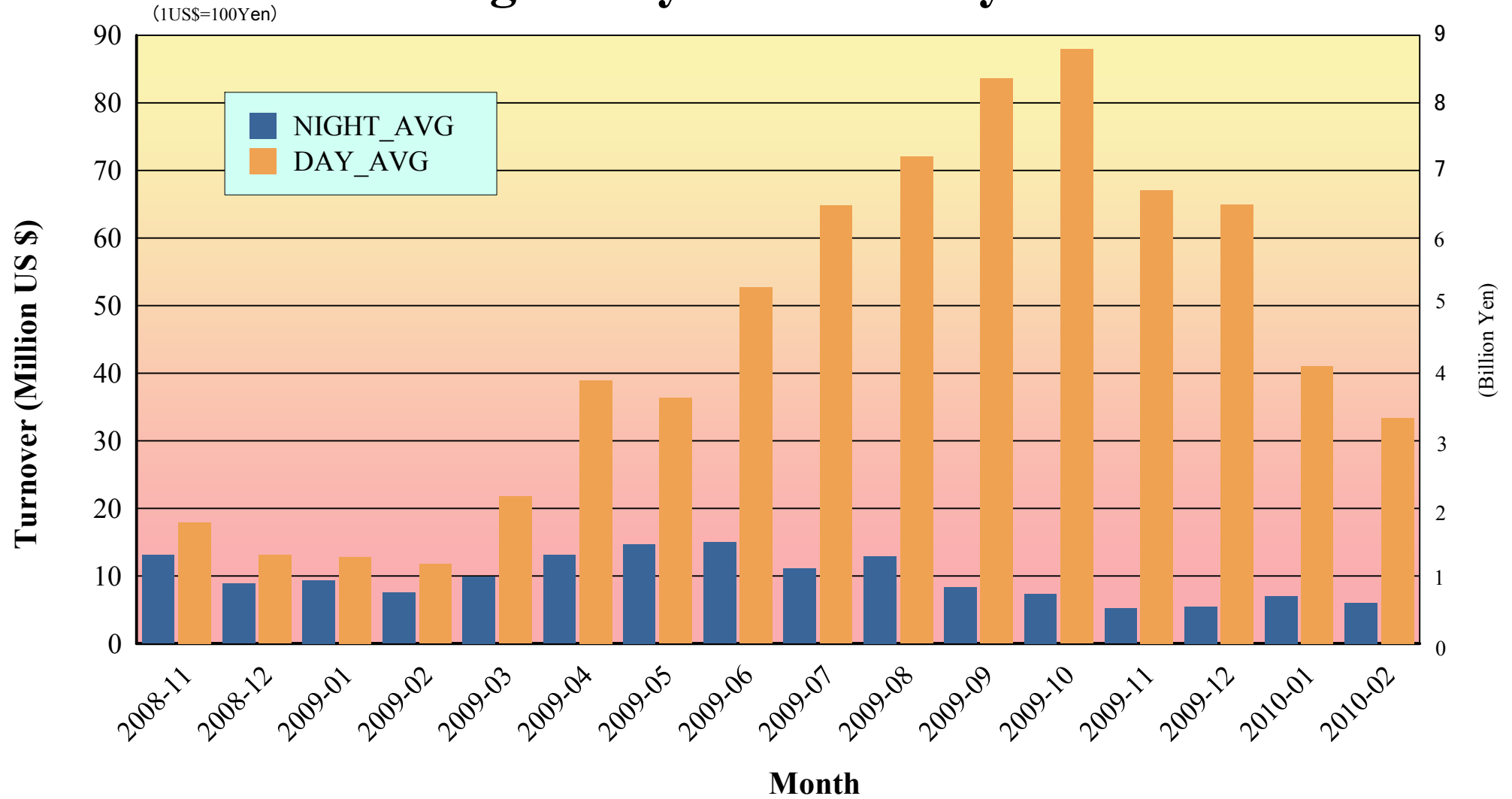
Daily Turnover on DAY Session



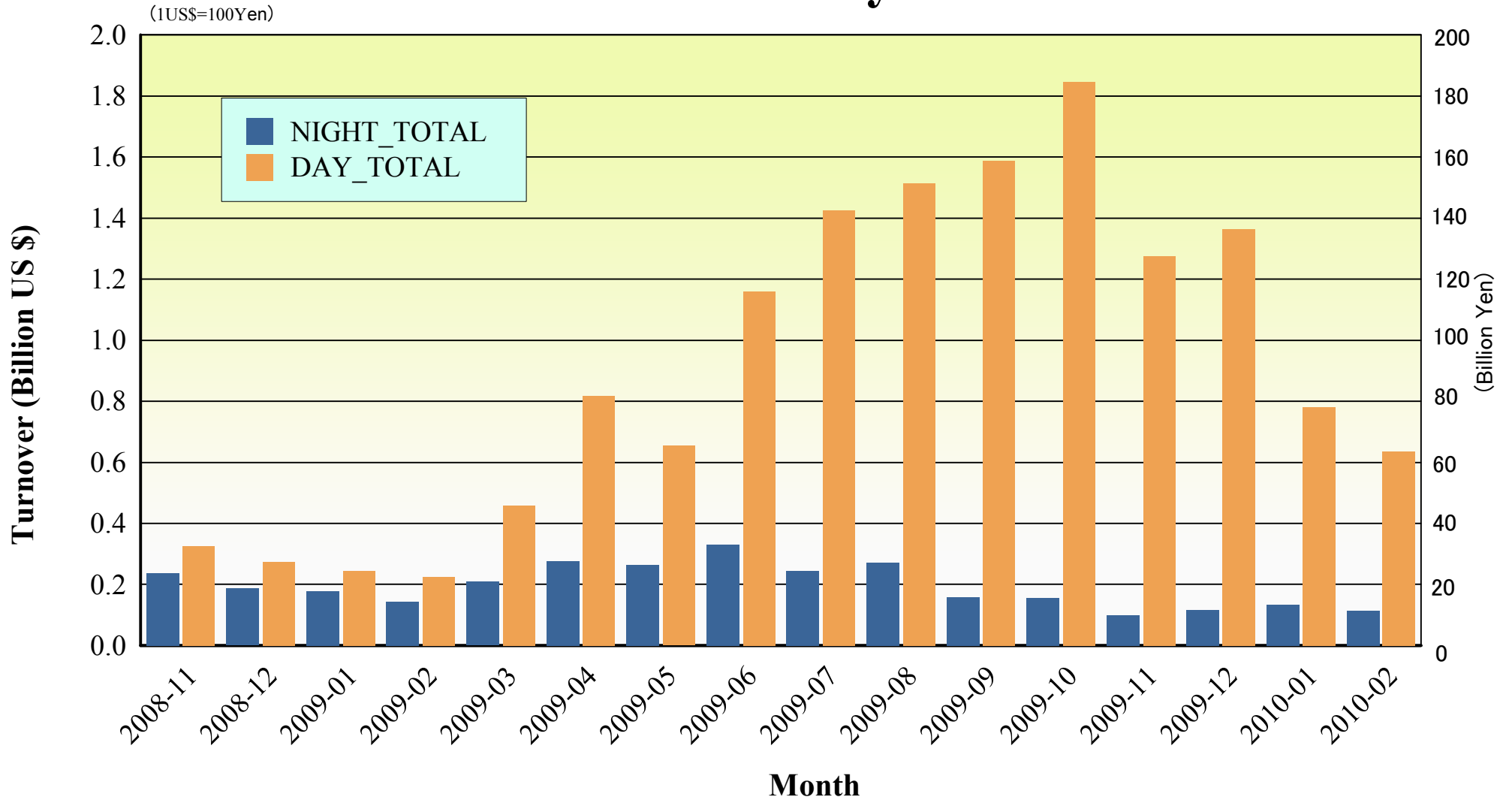
Daily Turnover on NIGHT Session



Average Daily Turnover by Month



Total Turnover by Month



"Daytime Session" Statistics

Nikkei 225 (Feb-2010)

SELL

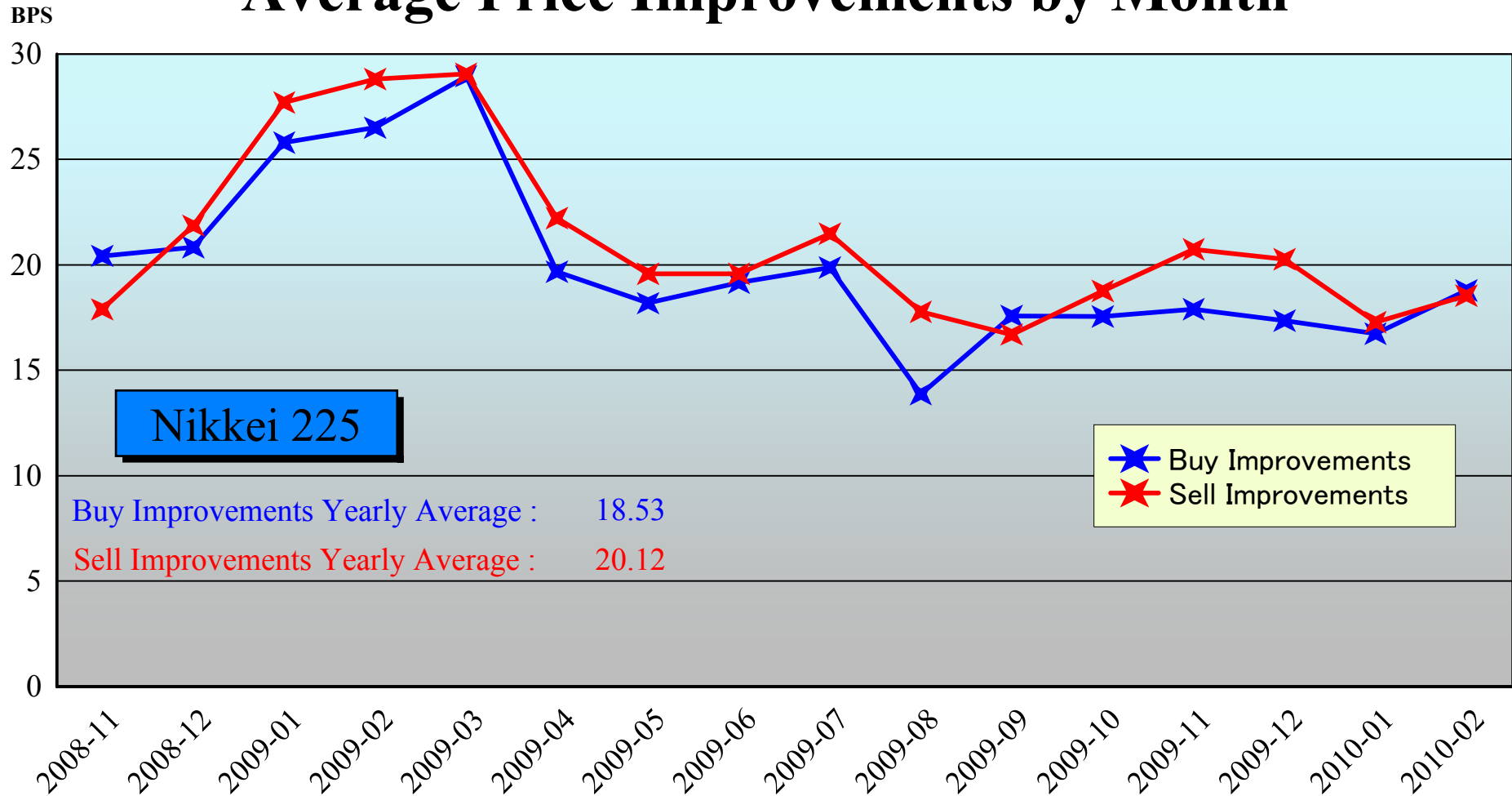
BUY

A. Worse Price Executions	783 (1.26%)	770 (1.24%)
B. Equal Price Executions	16,223 (26.07%)	20,766 (33.37%)
C. Better Price Executions	45,230 (72.67%)	40,700 (65.40%)
	<hr/>	
B + C	98.74%	98.76%
A'. Avg. Price Declines	-11.53BPS	-13.18BPS
C'. Avg. Price Improvements	18.53BPS	18.79BPS

Note1: Excluded the executions from before 9AM, lunch break, and after 3PM

Note2: Avg. Price Improvements are based on Japannext vs. Primary Exchange prices

Average Price Improvements by Month



Note1: Excluded the executions from before 9AM, lunch break, and after 3PM

Note2: Avg. Price Improvements are based on Japannext vs. Primary Exchange prices

Day/Night Monthly Turnover for Top 25 Names (Feb-2010)

(DAY Session)

	SYMBOL	DESCRIPTION	TEUNOVER (Million US\$ 1US\$=1Yen)
1	7751	CANON INC.	18.29
2	8306	mitsubishi UFJ FINANCIAL GROUP, INC.	17.60
3	8411	MIZUHO FINANCIAL GROUP, INC.	15.59
4	7203	TOYOTA MOTOR CORP.	15.05
5	8604	NOMURA HOLDINGS, INC.	11.93
6	6501	HITACHI, LTD.	10.60
7	5001	NIPPON OIL CORP.	10.05
8	6502	TOSHIBA CORP.	9.24
9	5401	NIPPON STEEL CORP.	8.74
10	8001	ITOCHU CORP.	8.46
11	9432	NIPPON TELEGRAPH & TELEPHONE CORP.	7.54
12	7267	HONDA MOTOR CO., LTD.	7.51
13	6988	NITTO DENKO CORP.	7.33
14	6702	FUJITSU LTD.	7.20
15	9020	EAST JAPAN RAILWAY CO.	7.10
16	6701	NEC CORP.	6.94
17	8031	MITSUI & CO., LTD.	6.11
18	6758	SONY CORP.	5.93
19	7201	NISSAN MOTOR CO., LTD.	5.78
20	8053	SUMITOMO CORP.	5.63
21	8403	SUMITOMO TRUST & BANKING CO., LTD.	4.70
22	9433	KDDI CORP.	4.51
23	6417	SANKYO CO., LTD.	4.35
24	4503	ASTELLAS PHARMA INC.	4.17
25	8802	mitsubishi ESTATE CO., LTD.	4.12

(NIGHT Session)

highlight : "Common" names for Day & NightTime

	SYMBOL	DESCRIPTION	TURNOVER (Million US\$ 1US\$=1Yen)
1	7203	TOYOTA MOTOR CORP.	11.20
2	8306	mitsubishi UFJ FINANCIAL GROUP, INC.	7.57
3	8411	MIZUHO FINANCIAL GROUP, INC.	6.58
4	4817	JUPITER TELECOMMUNICATIONS CO., LTD.	4.87
5	8316	SUMITOMO MITSUI FINANCIAL GROUP, INC.	4.02
6	6502	TOSHIBA CORP.	3.28
7	7267	HONDA MOTOR CO., LTD.	3.14
8	8058	MITSUBISHI CORP.	2.34
9	6758	SONY CORP.	2.00
10	6501	HITACHI, LTD.	1.93
11	8604	NOMURA HOLDINGS, INC.	1.80
12	8913	ZECS CO., LTD.	1.40
13	7974	NINTENDO CO., LTD.	1.22
14	6752	PANASONIC CORP.	1.21
15	7201	NISSAN MOTOR CO., LTD.	1.18
16	1321	NIKKEI 225 EXCHANGE TRADED FUND	1.05
17	8031	MITSUI & CO., LTD.	0.96
18	4502	TAKEDA PHARMACEUTICAL CO., LTD.	0.92
19	8815	TOKYU LAND CORP.	0.86
20	9424	JAPAN COMMUNICATIONS INC.	0.84
21	4321	KENEDIX, INC.	0.80
22	6301	KOMATSU LTD.	0.79
23	7003	MITSUI ENG. & SHIPBUILD. CO., LTD.	0.78
24	2416	LAWSON ENTERMEDIA, INC.	0.76
25	8002	MARUBENI CORP.	0.72

Improvements of Monthly Turnover for Top 25 Names (Feb-2010)

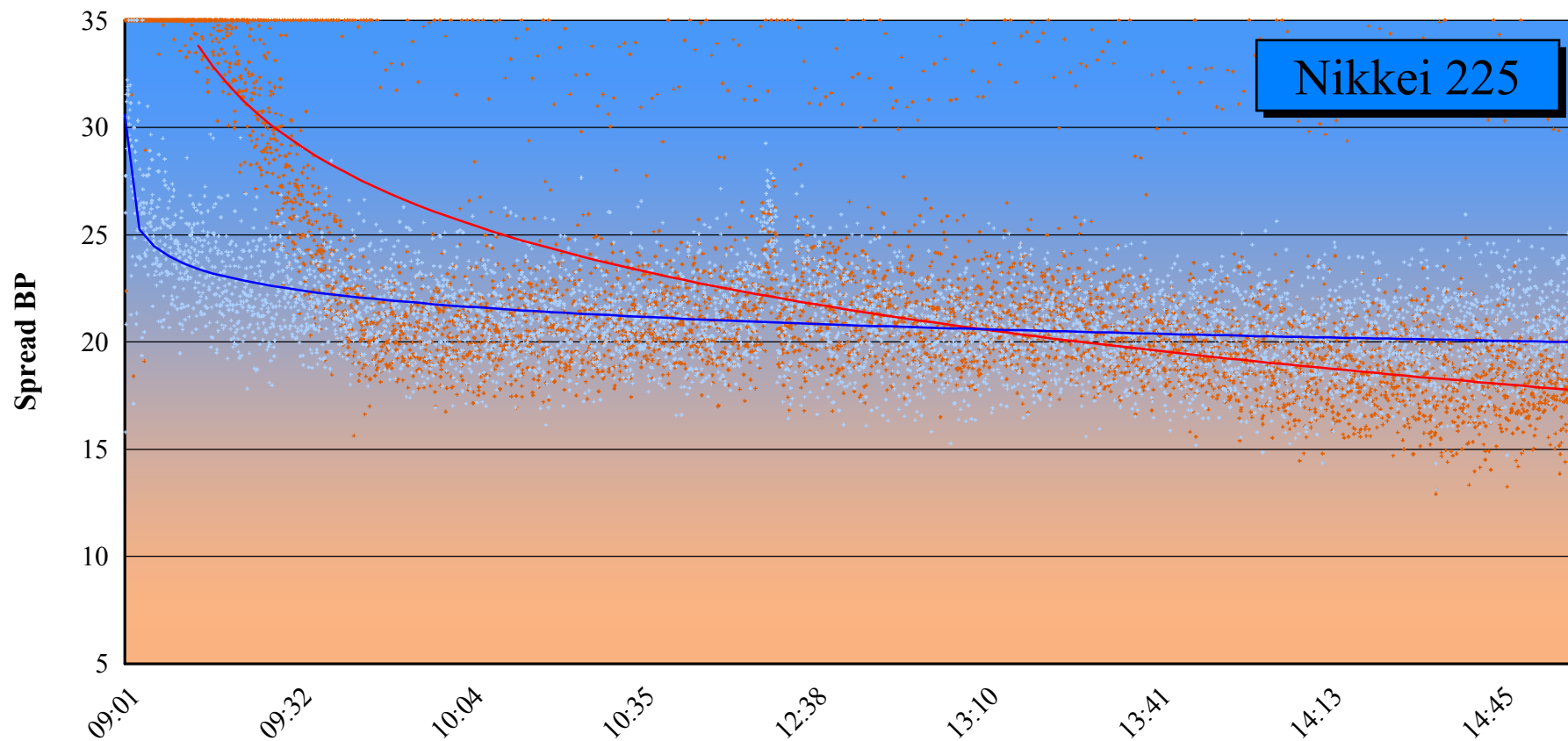
(Daytime Session)

	RIC	NAME	Sell Executions							Improve Avg. BPS	Buy Executions							Improve Avg. BPS
			Worse(A)		Equal(B)		Better(C)		(B) + (C)		Worse(A)		Equal(B)		Better(C)		(B) + (C)	
1	7751.T	CANON	2	0.24%	283	34.64%	532	65.12%	99.76%	10.87	6	0.73%	283	34.64%	528	64.63%	99.27%	11.15
2	8306.T	MUFG	1	0.03%	580	19.50%	2,393	80.46%	99.97%	16.61	2	0.07%	1,104	37.12%	1,868	62.81%	99.93%	13.77
3	8411.T	MIZUHO	4	0.16%	279	11.27%	2,193	88.57%	99.84%	36.53	22	0.89%	254	10.26%	2,200	88.85%	99.11%	28.52
4	7203.T	TOYOTA	6	0.85%	239	33.76%	463	65.40%	99.15%	11.37	9	1.27%	211	29.80%	488	68.93%	98.73%	11.33
5	8604.T	NOMRAHD	3	0.23%	455	34.73%	852	65.04%	99.77%	12.74	3	0.23%	491	37.48%	816	62.29%	99.77%	11.59
6	6501.T	HITACHI	3	0.31%	110	11.42%	850	88.27%	99.69%	26.91	7	0.73%	426	44.24%	530	55.04%	99.27%	17.04
7	5001.T	NPN-OIL	0	0.00%	245	40.10%	366	59.90%	100.00%	18.39	12	1.96%	233	38.13%	366	59.90%	98.04%	19.10
8	6502.T	TOSHIBA	2	0.41%	123	25.36%	360	74.23%	99.59%	15.90	12	2.47%	99	20.41%	374	77.11%	97.53%	15.48
9	5401.T	NPSTEEL	2	0.30%	87	12.91%	585	86.80%	99.70%	16.79	1	0.15%	166	24.63%	507	75.22%	99.85%	21.67
10	8001.T	ITOCHE	3	0.88%	221	65.19%	115	33.92%	99.12%	10.35	1	0.29%	53	15.63%	285	84.07%	99.71%	14.97
11	9432.T	NTT	1	0.17%	205	35.28%	375	64.54%	99.83%	9.51	3	0.52%	210	36.14%	368	63.34%	99.48%	10.76
12	7267.T	HONDA	2	0.39%	148	28.74%	365	70.87%	99.61%	13.14	2	0.39%	244	47.38%	269	52.23%	99.61%	12.90
13	6988.T	NTTODEN	14	2.27%	311	50.41%	292	47.33%	97.73%	12.61	11	1.78%	182	29.50%	424	68.72%	98.22%	15.02
14	6702.T	FUJITSU	7	1.26%	367	66.25%	180	32.49%	98.74%	10.53	4	0.72%	54	9.75%	496	89.53%	99.28%	17.00
15	9020.T	JR EAST	2	0.36%	299	54.46%	248	45.17%	99.64%	11.90	3	0.55%	119	21.68%	427	77.78%	99.45%	14.93
16	6701.T	NEC	0	0.00%	17	13.93%	105	86.07%	100.00%	36.43	0	0.00%	75	61.48%	47	38.52%	100.00%	26.52
17	8031.T	mitsui	12	1.91%	208	33.17%	407	64.91%	98.09%	6.33	6	0.96%	192	30.62%	429	68.42%	99.04%	6.89
18	6758.T	SONY	4	0.75%	179	33.58%	350	65.67%	99.25%	13.03	13	2.44%	172	32.27%	348	65.29%	97.56%	11.41
19	7201.T	NISSAN	8	0.82%	394	40.20%	578	58.98%	99.18%	10.43	0	0.00%	356	36.33%	624	63.67%	100.00%	12.15
20	8053.T	SMITOMO	2	0.20%	238	24.04%	750	75.76%	99.80%	9.25	8	0.81%	442	44.65%	540	54.55%	99.19%	7.86
21	8403.T	SMTB	0	0.00%	72	25.71%	208	74.29%	100.00%	14.09	4	1.43%	105	37.50%	171	61.07%	98.57%	16.45
22	9433.T	KDDI	4	1.15%	74	21.26%	270	77.59%	98.85%	9.67	11	3.16%	172	49.43%	165	47.41%	96.84%	7.68
23	6417.T	SANKYOP	7	1.12%	269	42.90%	351	55.98%	98.88%	12.11	30	4.78%	280	44.66%	317	50.56%	95.22%	11.75
24	4503.T	ASTELLAS	0	0.00%	94	25.00%	282	75.00%	100.00%	13.47	2	0.53%	211	56.12%	163	43.35%	99.47%	12.35
25	8802.T	MTB-EST	3	1.41%	52	24.41%	158	74.18%	98.59%	6.49	7	3.29%	42	19.72%	164	77.00%	96.71%	6.58

Note1: Excluded the executions from before 9AM, lunch break, and after 3PM

Note2: Avg. Price Improvements are based on Japannext vs. Primary Exchange prices

BBO Spread Japannext vs Exchange



Note1: Excluded the executions from before 9AM, lunch break, and after 3PM

Note2: Avg. Price Improvements are based on Japannext vs. Primary Exchange prices

- Exchange Daily Average BBO Spread
- Japannext Daily Average BBO Spread
- Exchange BBO Trend Line
- Japannext BBO Trend Line